

Trinahome

Trinahome PV solution system is designed to transform residential rooftop into an electrical power generation platform to supply to household electrical load. The complete solution consists of modules, inverter, grid-box, mounting structures and cables.



WARRANTY

Trina provides a 5 years standard warranty for Trinahome.

10 years
PV modules product warranty

5 years
Inverter and grid box warranty

25 years
PV modules performance warranty



Fully integrated, all in one PV solution kit



Energy independence and electricity bill saving for house owner



Stringent quality control process



Higher system reliability with professional engineering and technical support (Zero-export function)



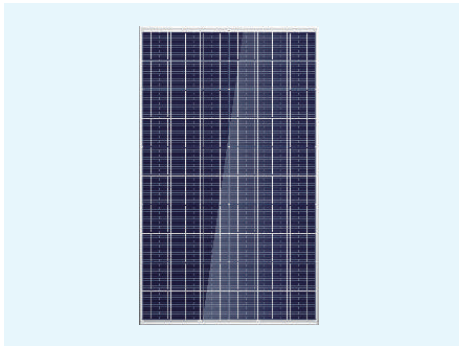
Industrial standard certifications for components



One-Stop service, product selection+ installation + service

Trinahome Configuration List

Kit Code	TSH-S01K60PT	TSH-S03K60PT	TSH-S05K60PT	TSH-T10K60PT
	TSH-S01K60PM	TSH-S03K60PM	TSH-S05K60PM	TSH-T10K60PM
Actual system size	270W*6 = 1.62KW	270W*12 = 3.24KW	270W*20 = 5.4KW	270W*38 = 10.26KW
Module	TSM-PD05			
Inverter	TS-1.5K1SJ	TS-3K1SJ	TS-5K2SJ	TS-10K2TJ
Grid Box	TS-GB3KS-LM-02	TS-GB3KS-LM-02	TS-GB5KS-LM-02	TS-GB10KT-LM-02
Mounting	Aluminum mountings for tile-roof(PT) and metal deck(PM)			
Cable	PV cable, AC cable, Grounding cable			



Module

TSM-PD05

Peak Power- P_{MAX}	270 W
Power Output Tolerance- P_{MAX}	0 ~ 5 W
Maximum Power Voltage- V_{MPP}	30.9 V
Maximum Power Current- I_{MPP}	8.73 A
Open Circuit Voltage- V_{OC}	37.9 V
Short Circuit Current- I_{SC}	9.22 A
Module Efficiency η_m	16.50%
Solar Cells	Multicrystalline 156.75 x 156.75 mm (6 inches)
Cell Orientation	60 cells (6 x 10)
Module Dimensions	1650 x 992 x 35 mm (65.0 x 39.1 x 1.38 inches)
Weight	18.6 kg (41.0 lb)



Inverter

TS-1.5K1SJ

TS-3K1SJ

TS-5K2SJ

TS-10K2TJ

Max. Efficiency	97.2%	97.5%	98.1%	98.3%
Europe Efficiency	96.5%	96.8%	97.3%	97.5%
MPPT Efficiency	>99.5%	>99.5%	>99.5%	>99.5%
Max. Input Power	1800 W	3500 W	5800 W	12000 W
Number of MPP Input	1	1	2	2
MPP Voltage Range	50-500 V	80-500 V	100-500 V	200-850 V
Max. Output Power	1700 W	3300 W	5000 W	11000 W
Max. Output Current	8.1 A	15.7 A	25 A	16.7 A
Rated Grid Voltage	230 Vac			380 / 400 V
Frequency	55-60 Hz			55-60 Hz
Dimension (W x H x D)	310 x 373 x 160 mm	310 x 373 x 160 mm	310 x 543 x 160 mm	563 x 310 x 129 mm
Weight	7.4 kg	7.7 kg	11.5 kg	20 kg
Protection Class	IP65			
Communication	RS485, GPRS/Wi-Fi (optional)			



Grid Box

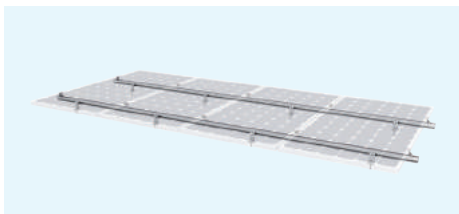
TS-GB3KS-LM-02

TS-GB3KS-LM-02

TS-GB5KT-LM-02

TS-GB10KT-LM-02

Rated Grid Voltage	230 V	230 V	230 V	400 V
Rated Input Current	20 A	20 A	32 A	20 A
Dimension (W x H x D)	350 x 250 x 150 mm		390 x 290 x 160 mm	
Weight	4.5 kg			5 kg
Protection Class	IP65			



Mounting

1.5kw

3kw

5kw

10kw

	1 x 3 modules x 2	1 x 3 modules x 4	1 x 4 modules x 5 1 x 5 modules x 4	1 x 4 modules x 10 1 x 5 modules x 8
Mounting Array				



Cable & Connectors

PV Cable	30 m	30 m	40 m	40 m
AC Cable	40 m	40 m	40 m	40 m
Grounding Cable	10 m	10 m	15 m	20 m
Connector	3 couples	3 couples	5 couples	5 couples