

# Trinahome

## YOUR PREMIUM SOLAR ROOF

— For Australia PV System

Trinahome PV solution system is designed to transform residential rooftop into an electrical power generation platform to supply to household electrical load. The solution provides key components such as solar modules, inverter, mounting structures, isolators required to install the system



### WARRANTY

Trina provides a 5 years standard warranty for Trinahome.

10 years  
PV modules product  
warranty

5 years  
Inverter warranty

25 years  
PV modules performance  
warranty



Fully integrated, all in one PV solution kit



Energy independence and electricity bill saving for house owner



Stringent quality control process



Higher system reliability with professional engineering and technical support (Zero-export function)



Industrial standard certifications  
CEC listed Solar modules, Inverter AS4777, Isolators AS 60947.3



One-Stop service, product selection+ installation + service

### Trinahome Configuration List

Kit Code A : DD05A.08(II) 310

Kit Code(DD05 310)	TSH-S03K60DT	TSH-S05K60DT
	TSH-S03K60DM	TSH-S05K60DM
Actual system size	310W * 12 = 3720W	310W * 20 = 6200W

Kit Code B : DD05A.08(II) 315

Kit Code(DD05 315)	TSH-S03K60DT	TSH-S05K60DT
	TSH-S03K60DM	TSH-S05K60DM
Actual system size	315W * 12 = 3780W	315W * 20 = 6300W

Inverter	TS-3K1SJ	TS-5K2SJ
Isolator	AC Isolator, Dc Isolator	
Mounting	Aluminum mountings for tile-roof(PT) and Tin roof(PM)	



#### Module

TSM-DD05A.08(II)

Peak Power- $P_{MAX}$	310 W	315 W
Power Output Tolerance- $P_{MAX}$	0 ~ 5 W	0 ~ 5 W
Maximum Power Voltage- $V_{MPP}$	33.1 V	33.3 V
Maximum Power Current- $I_{MPP}$	9.37 A	9.46 A
Open Circuit Voltage- $V_{OC}$	40.2 V	40.5 V
Short Circuit Current- $I_{SC}$	9.94 A	10.0 A
Module Efficiency $\eta_m$	18.9%	19.2%
Solar Cells	Monocrystalline 156.75 x 156.75 mm (6 inches)	
Cell Orientation	60 cells (6 x 10)	
Module Dimensions	1650 x 992 x 35 mm (65.0 x 39.1 x 1.38 inches)	
Weight	18.6 kg (41.0 lb)	

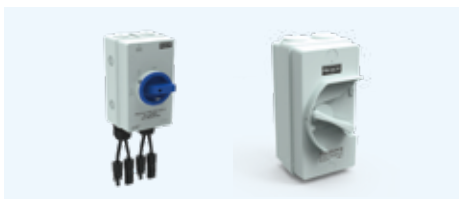


#### Inverter

TS-3K1SJ

TS-5K2SJ

Max. Efficiency	97.5%	98.1%
Europe Efficiency	96.8%	97.3%
MPPT Efficiency	>99.5%	>99.5%
Max. Input Power	3500 W	5800 W
Number of MPPT Input	1	2
MPPT Voltage Range	80-500 V	100-500 V
Max. Output Power	3300 W	5000 W
Max. Output Current	15.7 A	25 A
Rated Grid Voltage	230 Vac	
Frequency	55-60 Hz	
Dimension (W x H x D)	310 x 373 x 160 mm	310 x 543 x 160 mm
Weight	7.7 kg	11.5 kg
Protection Class	IP65	
Communication	WIFI(default) , RS485,GPRS(Optional)	

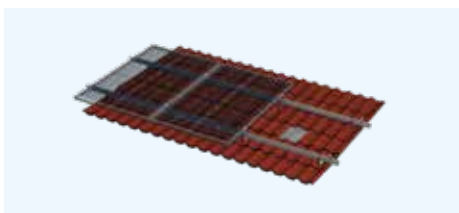


#### Isolator & Connectors

3kW Single-phase System

6kW Single-phase System

AC Isolator	32A 1pole * 1pcs	32A 1pole * 1pcs
	AC Enclosure 1pole * 1pcs	AC Enclosure 1pole * 1pcs
AC Breaker	32A 1pole * 1pcs	32A 1pole * 1pcs
DC Isolator	1200V 32A 4pole * 4pcs	1200V 32A 4pole * 4pcs
	DC Isolator Cover * 2pcs	DC Isolator Cover * 2pcs
MC4 Connectors	4 couples	8 couples



#### Mounting

3kW

6kW

	1 x 3 modules x 4	1 x 4 modules x 5
Mounting Array		

# Trinahome

— For Australia PV System

Trinahome PV solution system is designed to transform residential rooftop into an electrical power generation platform to supply to household electrical load. The solution provides key components such as modules, inverter, isolators and mounting structures required to install the system.



## WARRANTY

Trina provides a 5 years standard warranty for Trinahome.

10 years  
PV modules product warranty

5 years  
Inverter and grid box warranty

25 years  
PV modules performance warranty



Fully integrated, all in one PV solution kit



Energy independence and electricity bill saving for house owner



Stringent quality control process



Higher system reliability with professional engineering and technical support (Zero-export function)



Industrial standard certifications for components  
CEC listed Solar modules, Inverter AS4777, Isolators AS 60947.3



One-Stop service, product selection+ installation + service

### Trinahome Configuration List

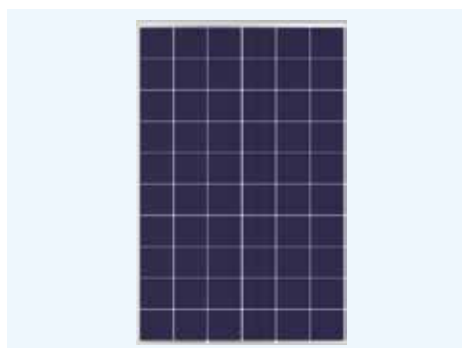
#### Kit Code A : PD05 275

Kit Code(PD05 275)	TSH-S05K60PT
	TSH-S05K60PM
Actual system size	275W * 22 = 6050W

#### Kit Code B : PD05 280

Kit Code(PD05 280)	TSH-S05K60PT
	TSH-S05K60PM
Actual system size	280W * 22 = 6160W

Inverter	TS-5K2SJ
Isolator	AC Isolator, Dc Isolator
Mounting	Aluminum mountings for tile-roof(PT) and Tin roof(PM)



#### Module

#### TSM-PD05

Peak Power- $P_{MAX}$	275 W	280W
Power Output Tolerance- $P_{MAX}$	0 ~ 5 W	0 ~ 5 W
Maximum Power Voltage- $V_{MPP}$	31.1 V	31.4 V
Maximum Power Current- $I_{MPP}$	8.84 A	8.92 A
Open Circuit Voltage- $V_{OC}$	38.1 V	38.2 V
Short Circuit Current- $I_{SC}$	9.32 A	9.4 A
Module Efficiency $\eta_m$	16.8 %	17.1 %
Solar Cells	Polycrystalline 156.75 x 156.75 mm (6 inches)	
Cell Orientation	60 cells (6 x 10)	
Module Dimensions	1650 x 992 x 35 mm (65.0 x 39.1 x 1.38 inches)	
Weight	18.6 kg (41.0 lb)	



#### Inverter

#### TS-5K2SJ

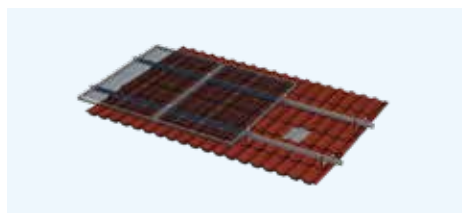
Max. Efficiency	98.1%
Europe Efficiency	97.3%
MPPT Efficiency	>99.5%
Max. Input Power	5800 W
Number of MPPT Input	2
MPPT Voltage Range	100-500 V
Max. Output Power	5000 W
Max. Output Current	21.7 A
Rated Grid Voltage	220/230 Vac
Frequency	50 /60 Hz
Dimension (W x H x D)	310 x 543 x 160 mm
Weight	11.5 kg
Protection Class	IP65
Communication	WiFi(default), RS485,,GPRS(Optional)



#### Isolator & Connectors


#### 6kW Single-phase System

AC Isolator	32A 1pole * 1pcs AC Enclosure 1pole * 1pcs
AC Breaker	32A 1pole * 1pcs
DC Isolator	1200V 32A 4pole * 4pcs DC Isolator Cover * 2pcs
MC4 Connectors	8 couples



#### Mounting

#### 6kW

Mounting Array	1 x 4 modules x 6 
----------------	--